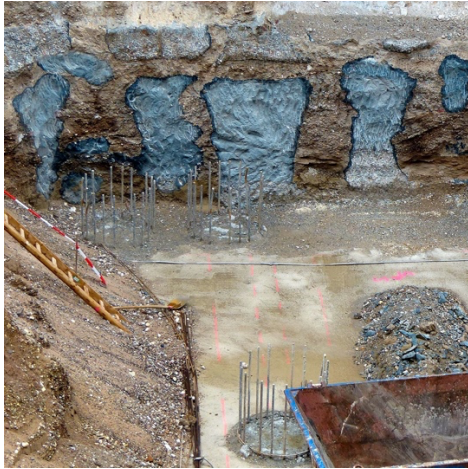


maig24 Design Studio

The Big Hole—The Urban Pit



Semester	2
Campus	Ghent
ECTS Study Points	15
Titular	<i>Lars Fischer</i>
Teachers	<i>Lars Fischer</i>

learning outcomes

The student can make a relevant design starting from different spatial levels and the dimension of time.

The student can make a relevant design starting from the care for quality of comfort and an awareness of sustainability.

The student can generate a relevant design starting from a complex cultural and social analysis.

The student can reason in a problem-solving manner with regard to building techniques.

Assignment file 2021-2022 – Information subject to changes

contents and approach

The Big Hole refers to specific landscapes of excavation, addressing both the actual void left in the earth's crust as well as the loss of meaning in the term sustainability. How we talk about and communicate sustainability sets up specific expectations of how we deal with it.

This studio will discuss and establish an aesthetics of ecology as a means to communicate a concept of what the contemporary relation of architecture and environment actually is and could potentially be.

Zooming in on sites of excavation for new constructions and the remnant pits of buildings long demolished we take the urban construction pit as a location to explore architecture's relation to the ground it stands on and the foundations that anchor it.

The lifeless crystalline-mineral quality that characterizes the foundation wall makes it a formal manifestation of stone construction; its nature corresponds completely to what is placed on top of it.
Gottfried Semper

Taking Semper's quote as a point of departure of how architecture's foundation walls were historically understood as inert and determined by architecture the studio will investigate reversing the relationship by viewing the foundation and the ground not as inanimate but something that has a history and a presence. If the ground has an agency of its own, it can in turn give description to the architecture it supports. By focusing on the ground and the materiality of the foundation wall, a new architectural project will be developed through means of observation, documentation, analysis and ultimately representation that seeks to inform architecture through the global historical processes that shape our environment.

This studio approaches the question of architecture and ecology beyond a technical narrowing of the topic. It considers this question rather from a cultural perspective and examines design, organizational and material processes as well as their connection to specific forms of life. It concerns the interplay of various design tasks, including those relating to building materials and construction, going beyond the primarily visual, and connecting with the domain of sensual experiences and bodily practices, as well as the social and the societal.

The studio is broken down into three phases:
a research phase, an exploration phase, and a design phase.

The goal of the studio is to ultimately locate an architectural language of sustainability, looking towards an expanded architectural literacy in order to formulate alternatives for more ecological modes of production and consumption in architecture.

timing

	Activity	Remark
Week 1	intro	
Week 2	research	1. the research
Week 3	research presentation	
Week 4	site analysis	2. the site exploration
Week 5	site development	
Week 6	design statement	3. the design
Week 7	workshop	tbc
Week 8	position statement	
Week 9	design development	
Week 10	pre-review	
Week 11	design consultation	
Week 12	design consultation	
Week 13	final review	

procedure of evaluation

Assignment file 2021-2022 – Information subject to changes

Continuous assessment without exam during the examination period
Description of evaluation : Project/Product, Presentation, Process evaluation
No 2nd examination opportunity.

evaluation criteria

The student can make a relevant design starting from different spatial levels and the dimension of time.

The student can make a relevant design starting from the care for quality of comfort and an awareness of sustainability.

The student can generate a relevant design starting from a complex cultural and social analysis.

The student can reason in a problem-solving manner with regard to building techniques.

output, deadlines and formal criteria

Output	Date	Formal criteria
research presentation	02.03.22	
design statement	23.03.22	
position statement	20.04.22	
pre-review	04.05.22	
final review	25.05.22	