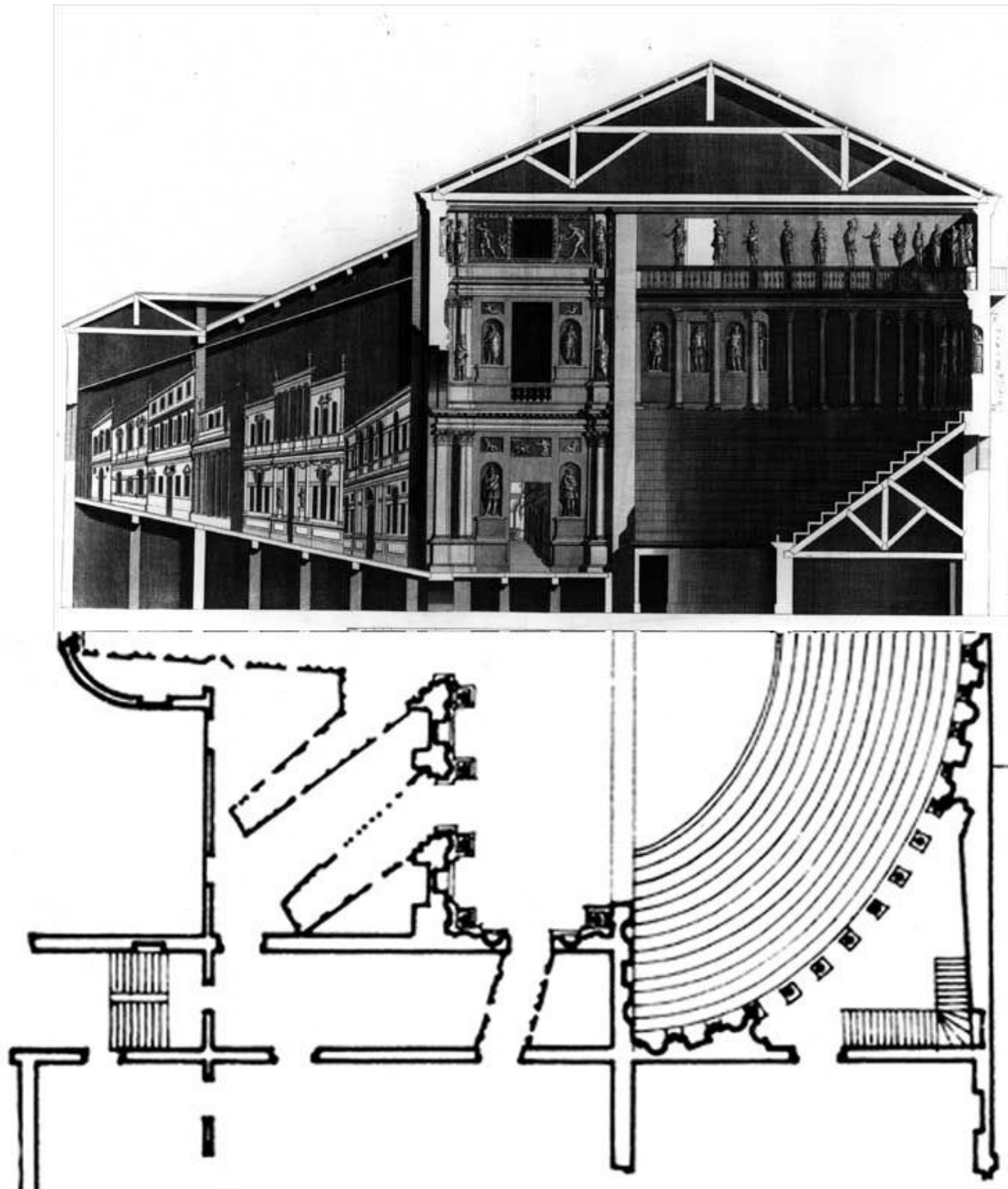
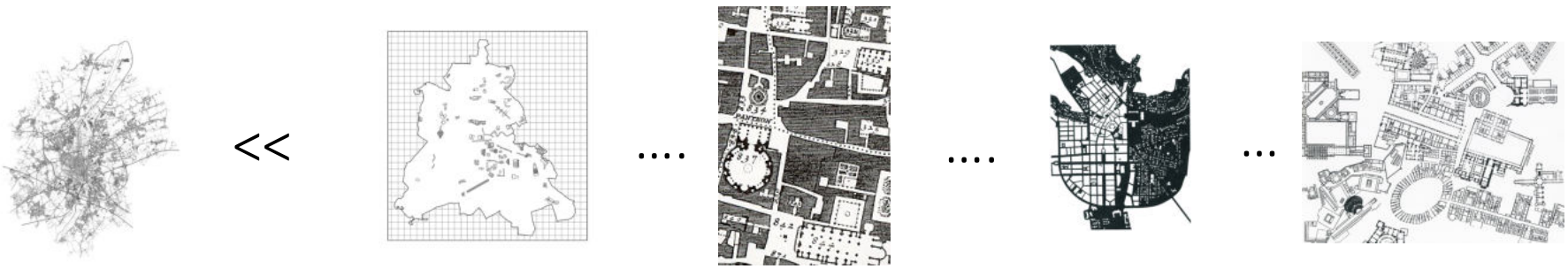
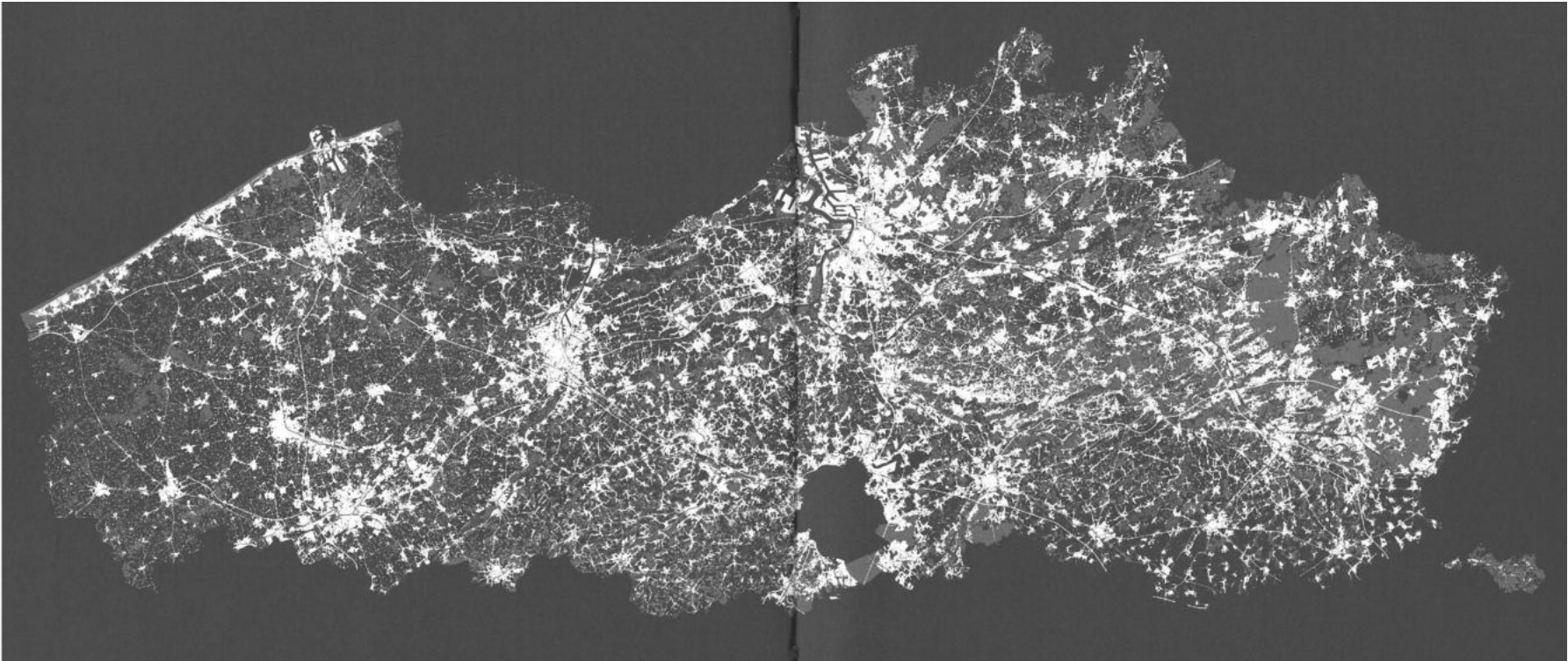


STUDIO AS-S(E)AMP(B)LING MA1 : Christopher Paesbrugge + Karen Kesteloot

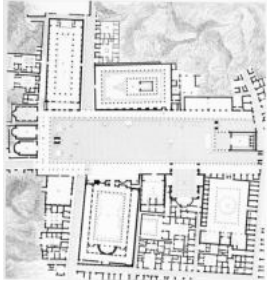


SAMPLING  
ASSEMBLE  
AS-SAMPLING  
AS-S(E)AMP(B)LING

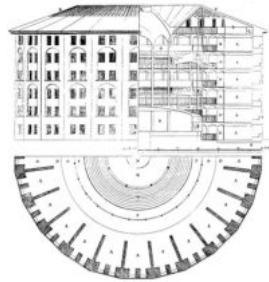
CONTEXT = COLLAGE = CONTEXT



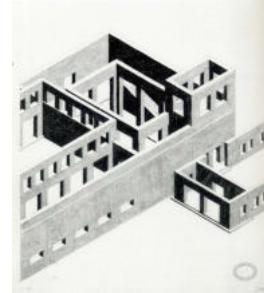
urban fragments



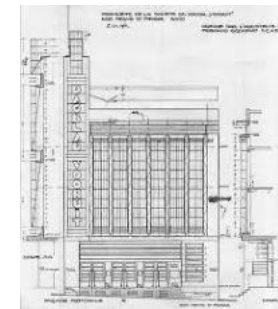
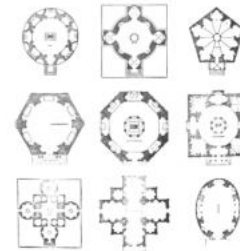
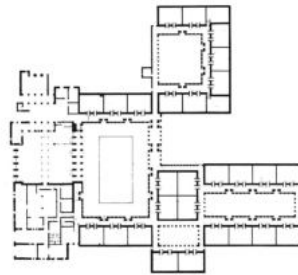
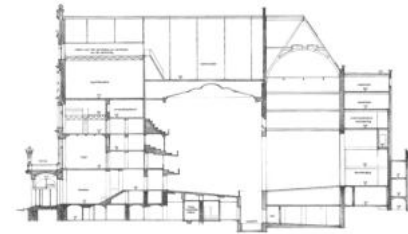
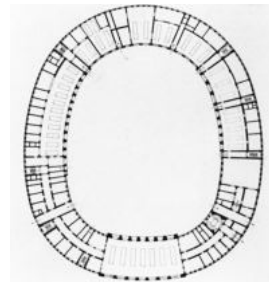
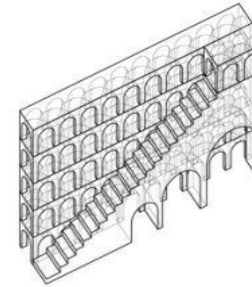
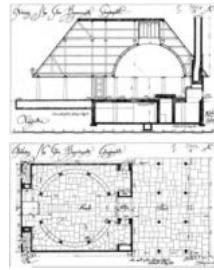
(autonomous) typologies



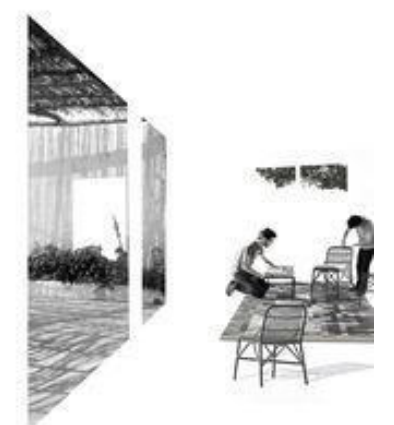
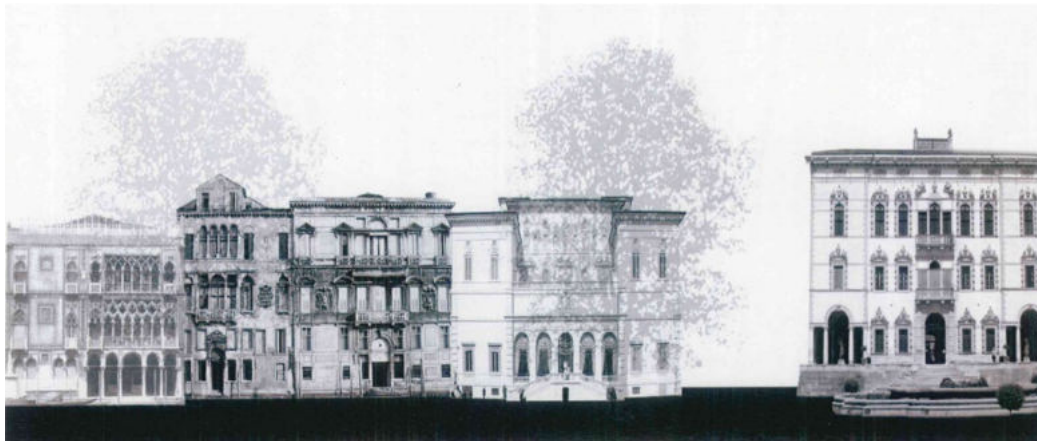
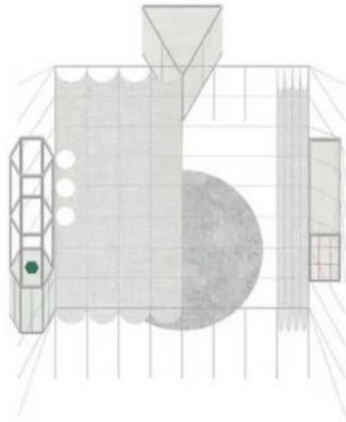
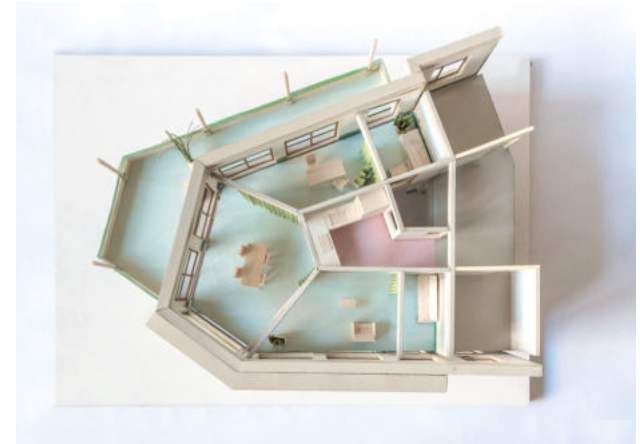
architectural motives



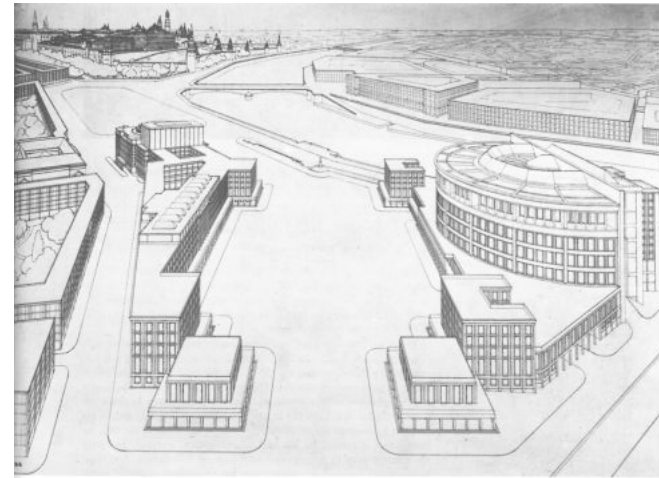
with greetings from ghent



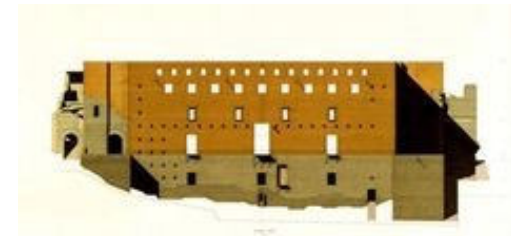
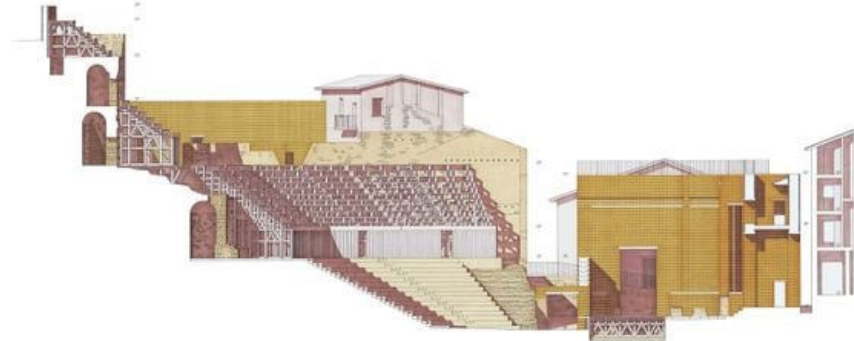
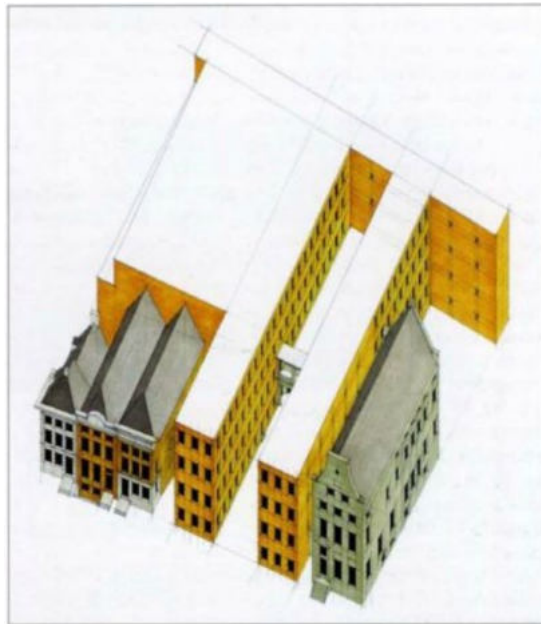
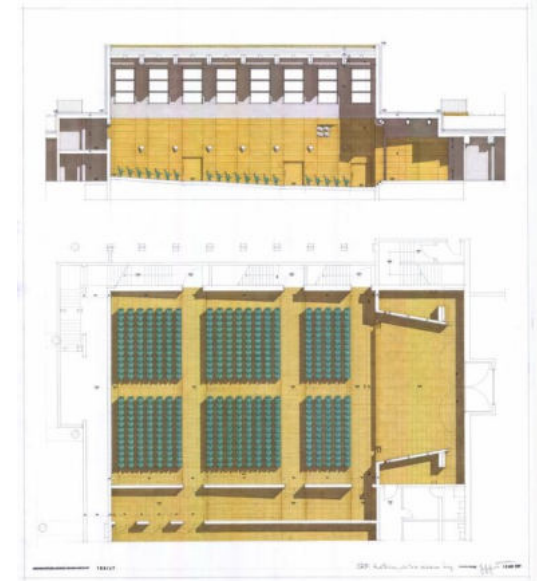
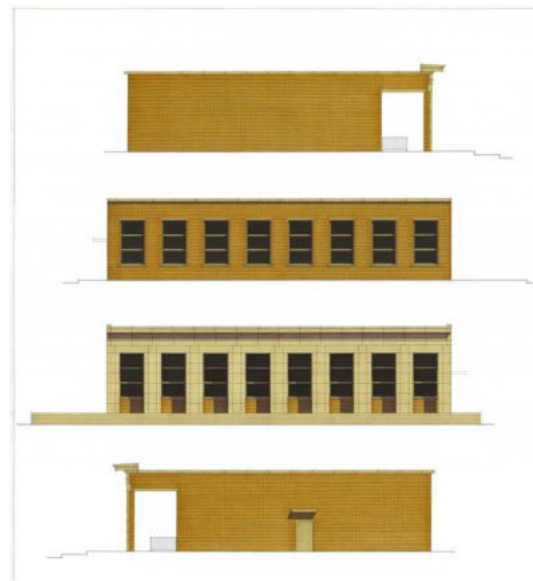
# I CATALOGUE OF SAMPLES



## II SAMPLING ANALOGUE COLLAGES



### III (RE)ASSEMBLING COLLAGES



#### IV EXTRACTING (NEW) SAMPLES

CREATIVE  
DISTRICT

CULTURAL SPOT

