

(DE)CONSTRUCTED NATURE

ALL THAT WAS EVER AVAILABLE

NATURE

DECONSTRUCTED

WE, AN ORIGIN OF NATURE

FORMATION OF CULTURE

WHICH IS NOW CONSTRUCTED BY THE HUMAN MIND

A CONTROLLED REALITY

A DISCONNECTION TO THE MATERIALS

**IN A CONSTRUCTED UNIVERSE
OF DECONSTRUCTED NATURE**

A DISCONNECTION FROM OUR OWN ROOTS

TO DIVE INTO THE (UN)KNOWN OF NATURE

TO RECONSTRUCT THE DECONSTRUCTED



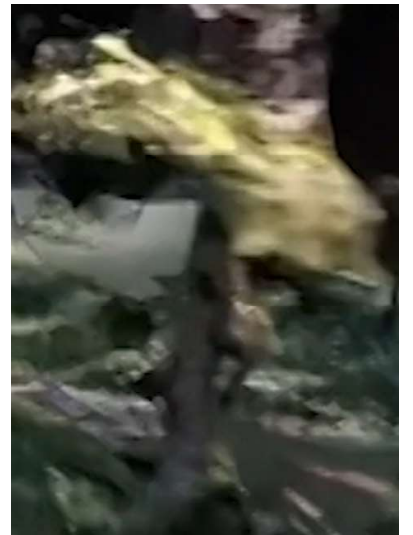
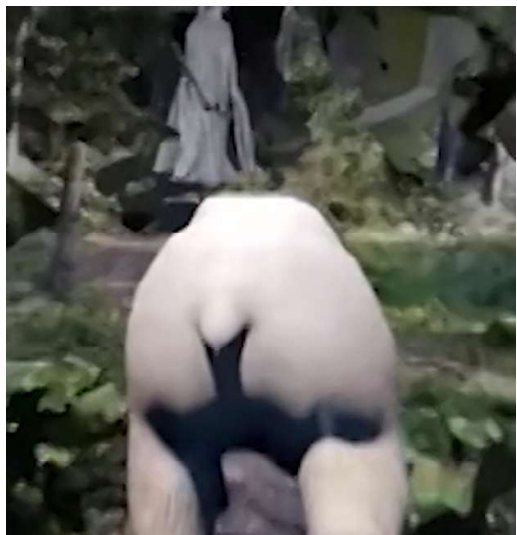
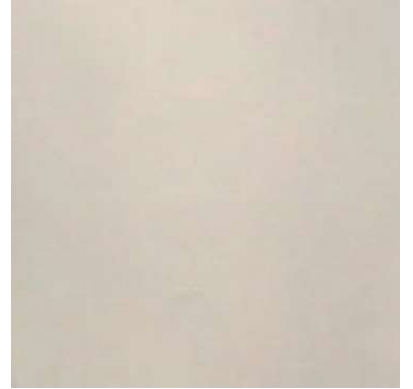
DECONSTRUCTED nature

Nature, in the broadest sense, is the natural, physical, material world or universe.



DECONSTRUCTED fragments

Looking for the origin of materials within different video fragments. Experimenting with how they can enter into conversation with each other. Natural versus artificial landscapes.



DECONSTRUCTED NATURE

EARTH
NATURE

HUMAN
CULTURE

CONTROLLED REALITY
CONSTRUCTED BY THE HUMAN MIND
CONSTRUCTED UNIVERSE

DECONSTRUCTED NATURE TO RECONSTRUCT



Rules and guidelines are getting more and more sustainable looking, socially accepted, financially challenged. Architecture is what makes earth human. Human is what makes earth dissolve.

Everything that happened before us, is created by parts of us. Humanity is a creative adaptation being made to this world. Decades, centuries have passed by, where the truth of believes in the creativity of humanity were not discovered. There are no limitations of creativity. Therefore, we experienced a lot of misplacements of adaptations to the world, to only realize afterwards it is a detriment for the planet earth.

Life comes with waves. After every down moment there is an up, and the other way around. It is not therefor to believe that every wave up and down are as big as what came or is coming. The waves are indispensable. The adaptation of human mind and creativity within it, is on how to learn how to surf on those waves of lifetime experiences. Only that way we can adapt to the deeper connection to earth and the unavoidable challenging waves of life.

Waves, different ups and downs of humankind, are a fact. But the solution of a human mistake is being placed to us in nature. Nature can therefore be a guideline on how to live on planet earth.

Architecture therefor, is a human creation out of survival instincts, being initiated from resources of nature. After years of developing skills and implementing human inventions, architecture has now grown a whole new look of planet earth. It added another layer above the start of everything.

It gave us new opportunities in every way possible, but like everything this comes with positively affected, but strongly negative sides. We feel limitless, and every achievement we reach, we take it to the next to add it within a new challenge. But it starts with looking at what nature is telling us to do; what are instincts are craving us to do; to find the connection with one another, to live as strongly developing people, together with the nature of the world.

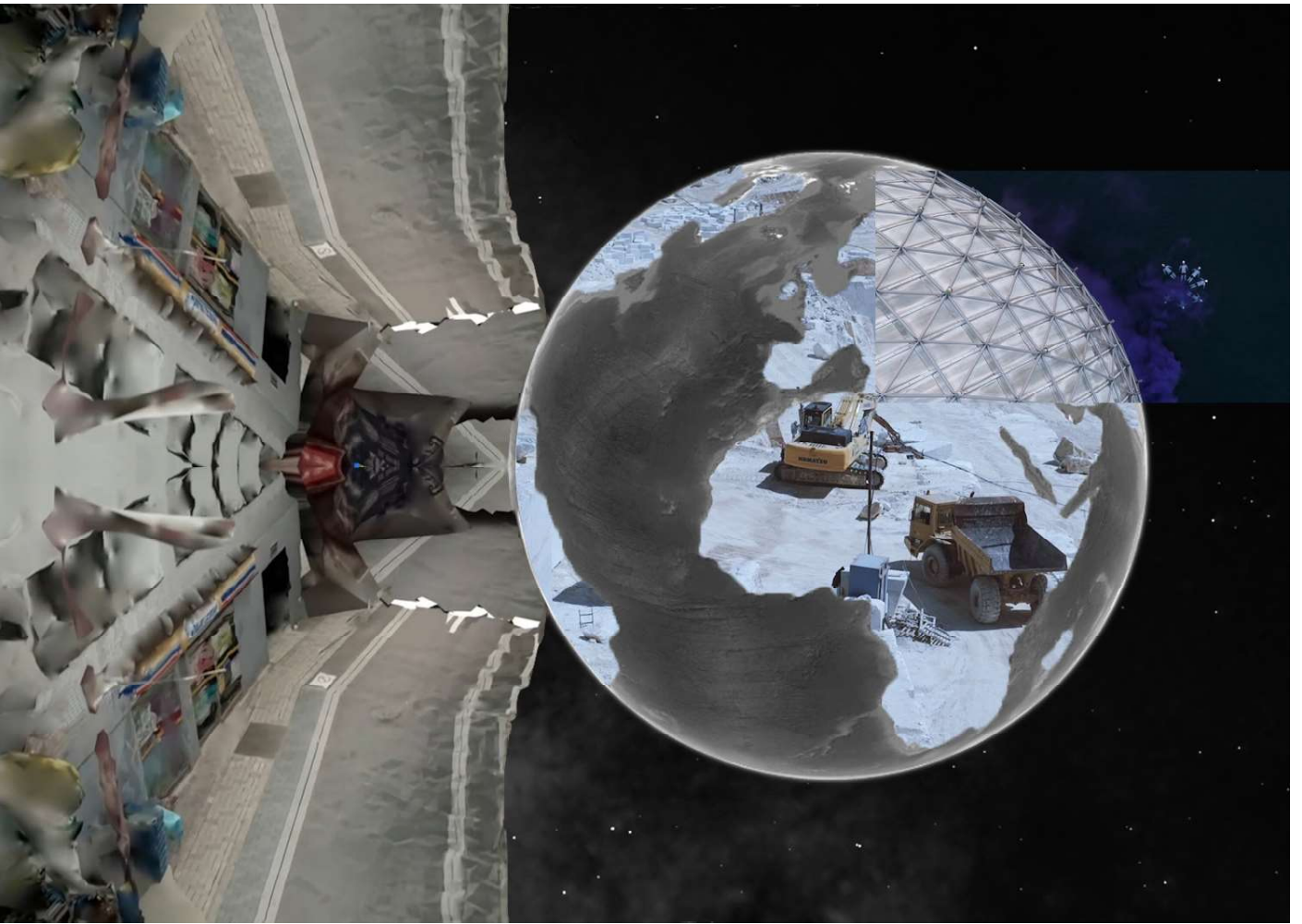


We, humans, often determined ourselves in history where we assigned our homes in the universe, and in doing so, how living determines the boundaries of that universe. They have arisen from beliefs, myths, fears, but also from solutions out of self-protection and the habits of meeting and communicating. Houses are a revelation of their inhabitants, and in turn their complex relationship to earth, water, light and air.

Settling in a specific place provides a connection to that landscape. In several traditional cultures, people follow the curves and slopes of the topography, resting on poles to protect the forest or water plains. Without appropriating anything, the houses borrow from their surroundings what is necessary for their construction, while connecting with the landscape. Or they follow the river currents, attach themselves to a mountain as protection from the wind, but then always being careful not to disturb the universal harmony.

The first physical break between man and nature comes from the creation of the first plan of a house; drawn around the ground to create a small boundary between inside and outside. The boundary between the domestic and the wild. The body of the house responds to the natural needs of the human body, accepts it and realises it.

‘The building of a house offers the occasion to affirm a certain way of being in the world. Any house testifies to the order and mastery of materials, as precarious as those materials may be in extreme climates. It is an imprint of life that is significant in itself since it speaks about the conditions of life.’

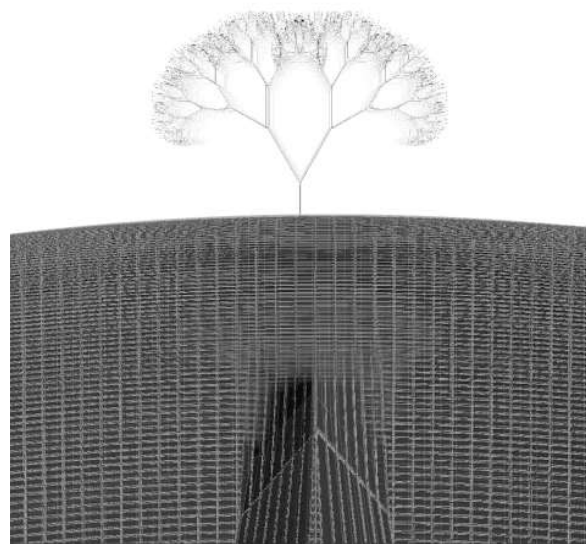


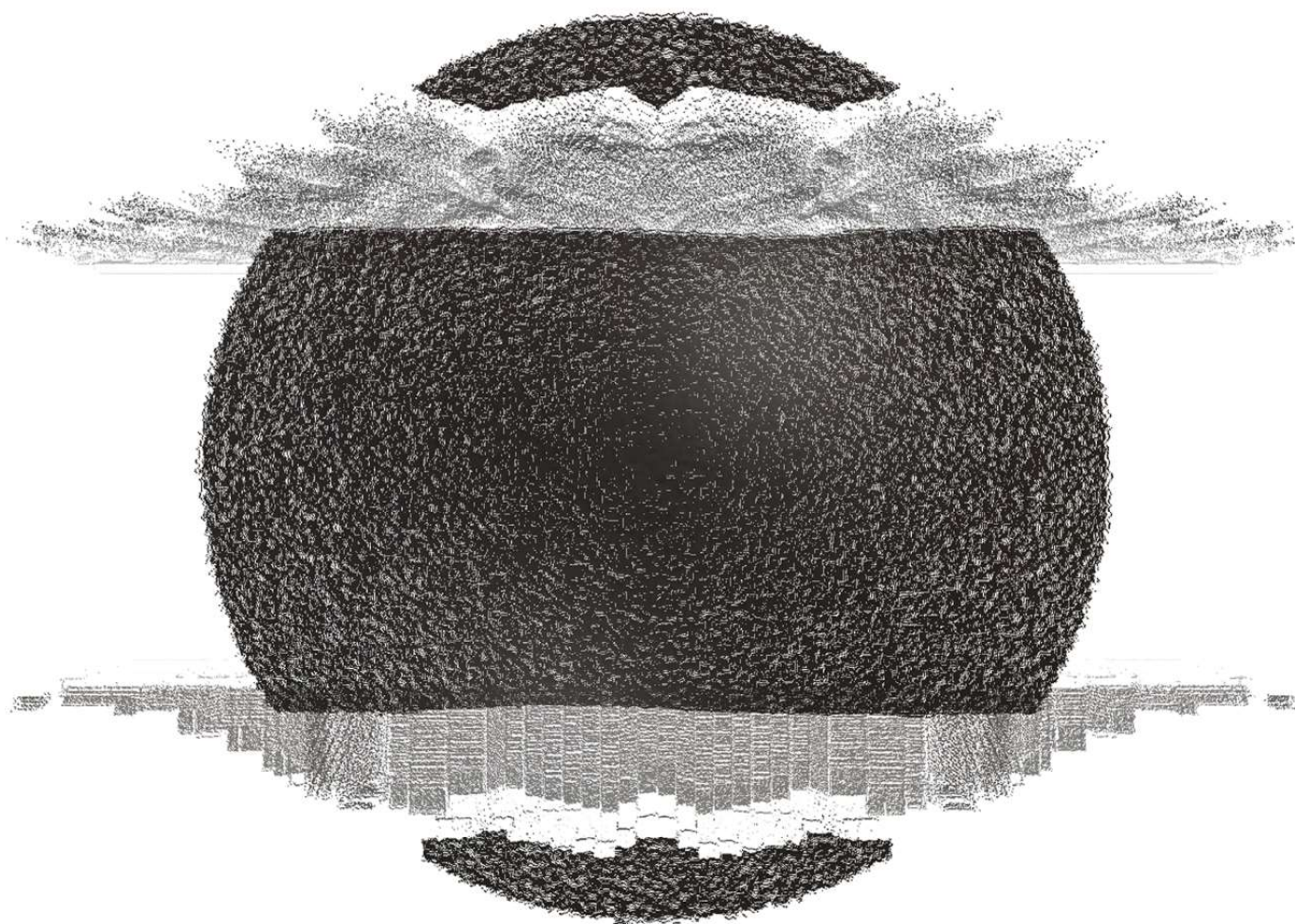
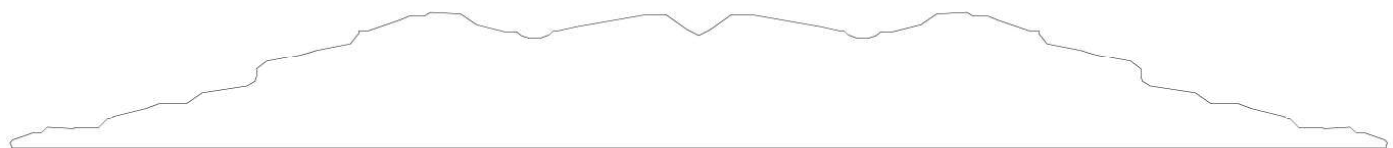
'WHEN A TINY THING, SUCH AS AN EXOTIC PLANT, ARRIVES IN THIS SPACE FROM AFAR, MUST WE STRUGGLE AGAINST IT JUST BECAUSE IT'S AN EXOGENOUS PLANT COMING TO DESTROY THE INITIAL SITUATION? I PREFER TO SAY: IT COMES IN GOOD WILL AND WE'LL LOOK AFTER IT! OF COURSE, THIS REQUIRES A MANAGEMENT STRATEGY: WHEN THERE ARE INVASIONS I REGULATE THEM A LITTLE, AND THIS IS WHAT MAKES IT A GARDEN, EVEN IF IT'S A GARDEN THAT WORKS MOSTLY BY ITSELF.'

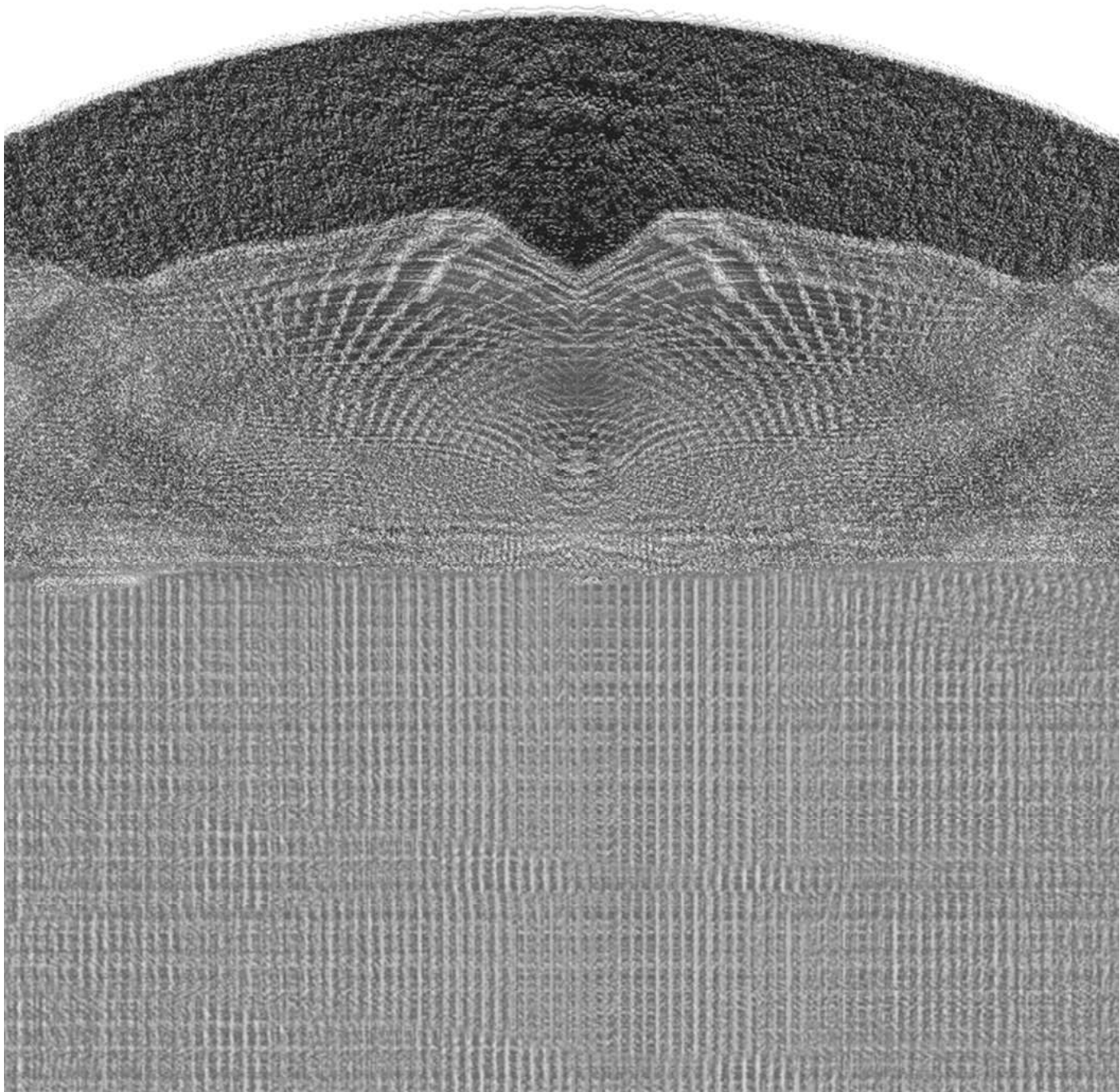
- Gilles Clement

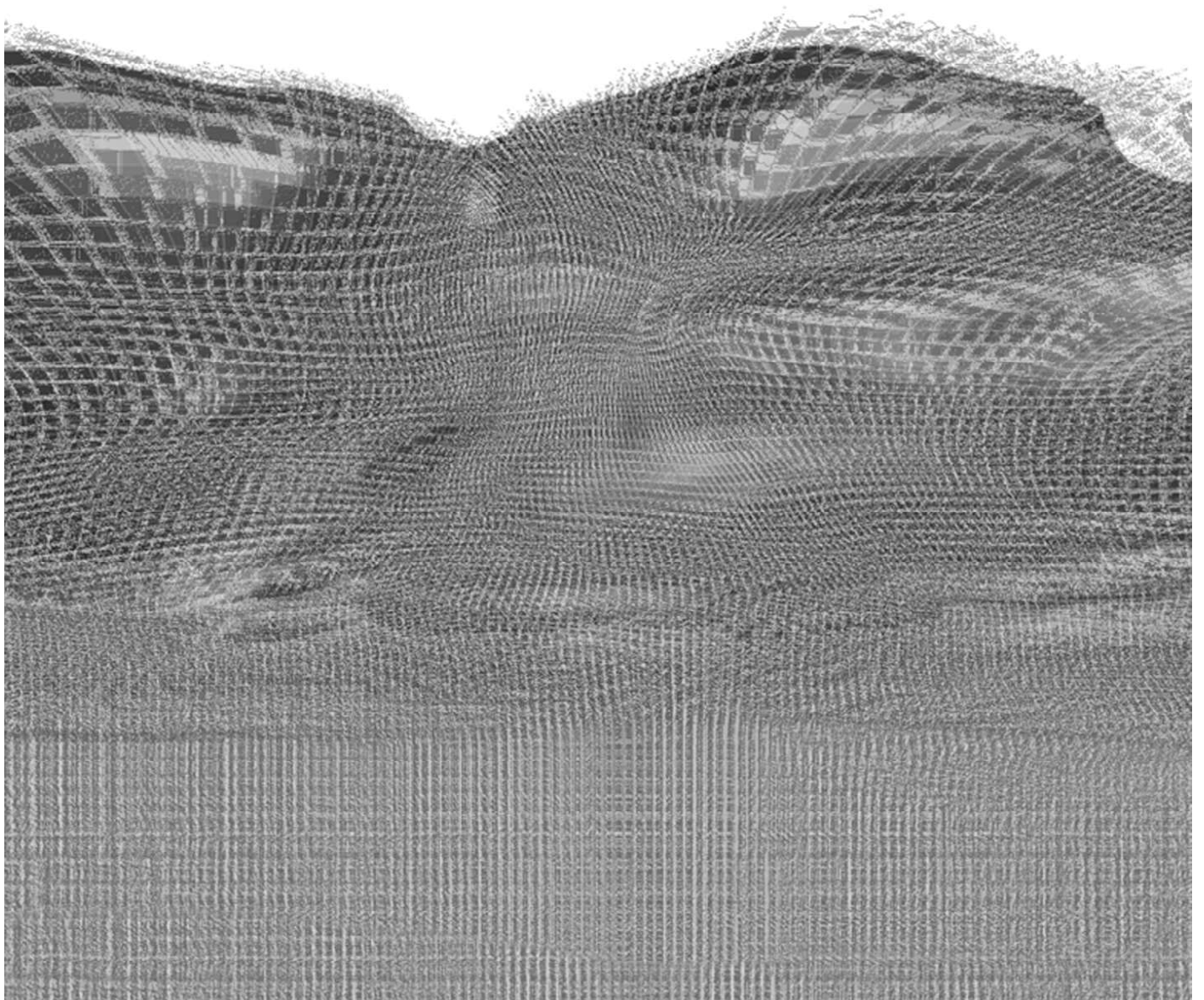


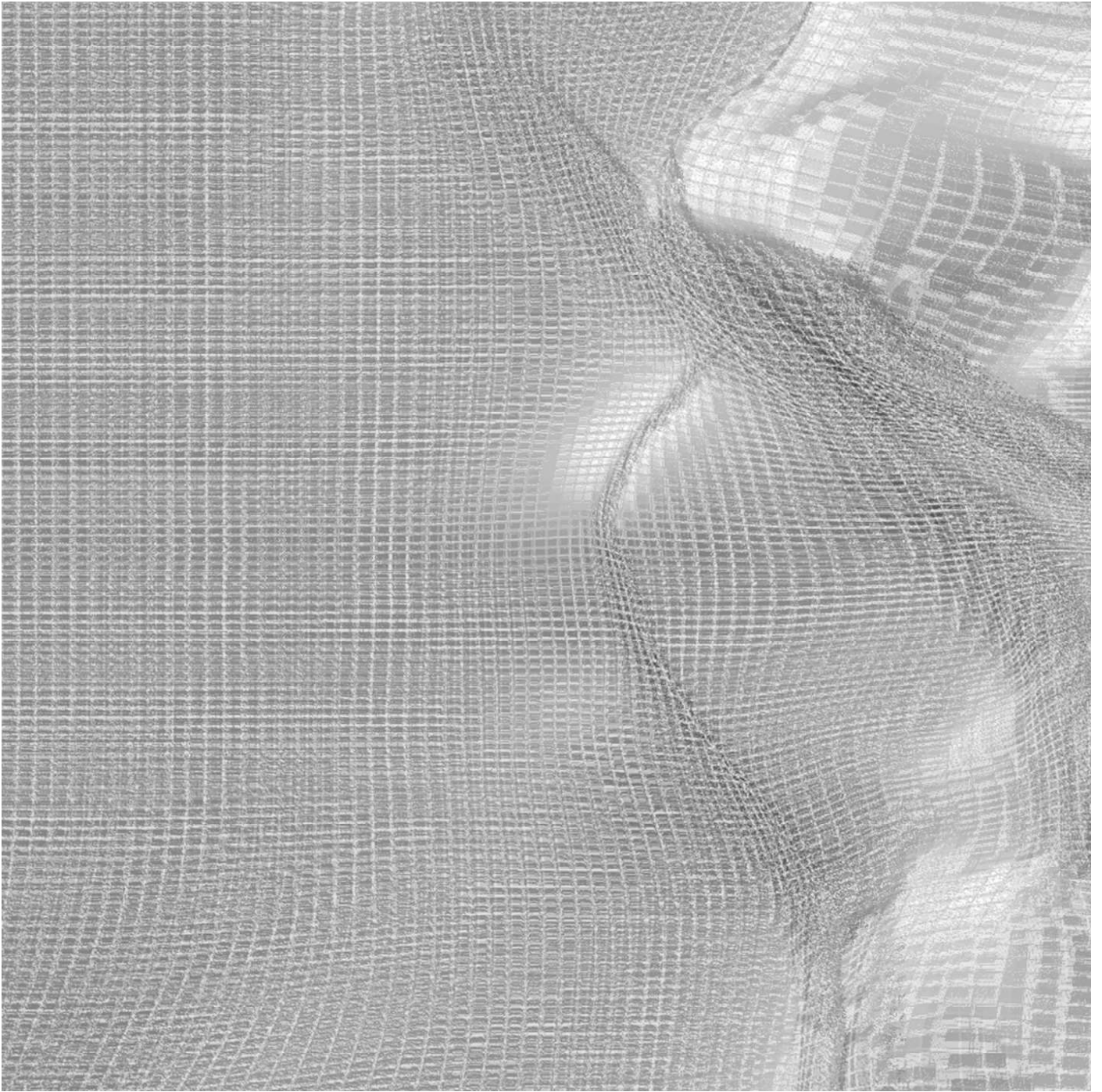


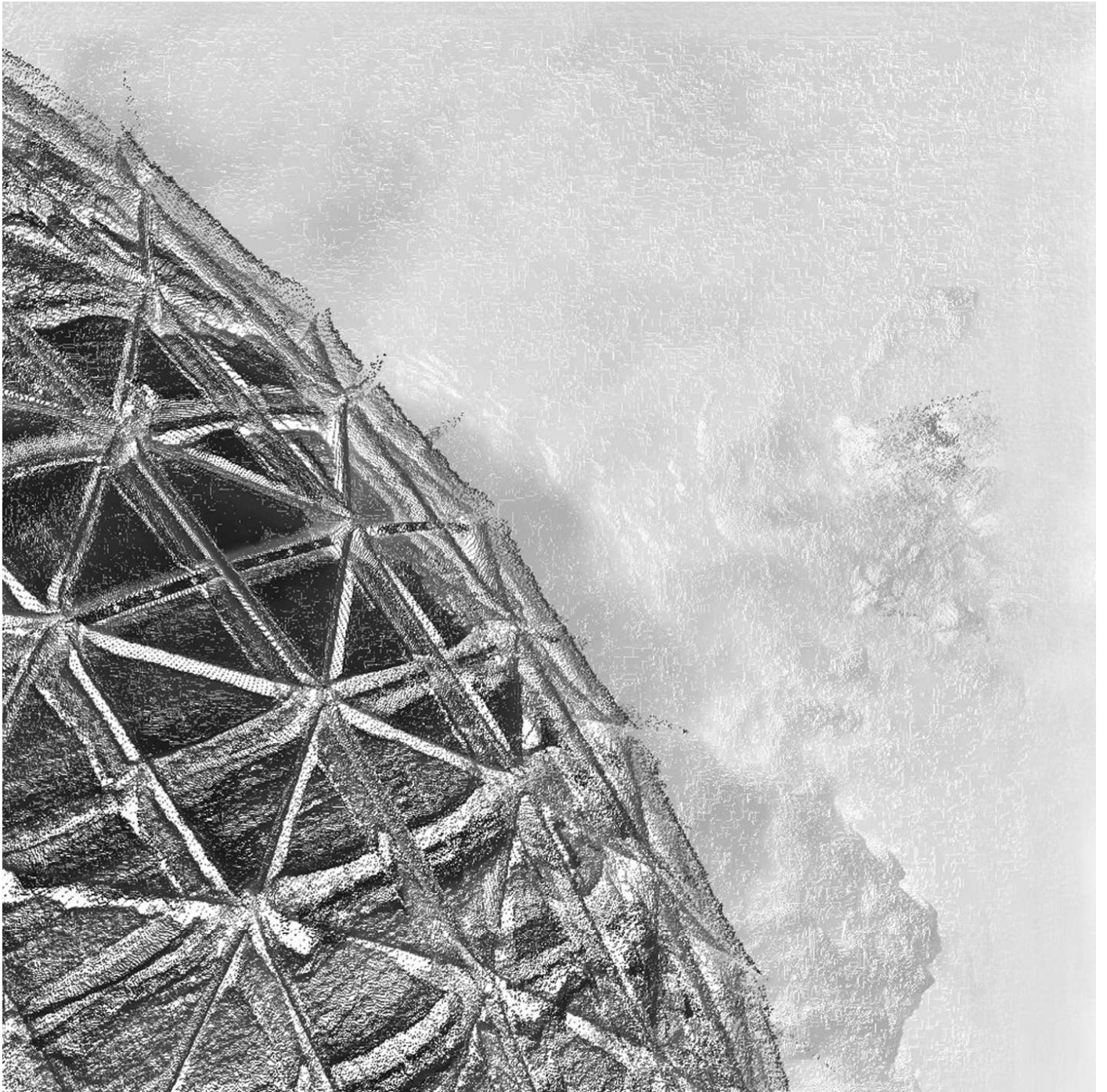


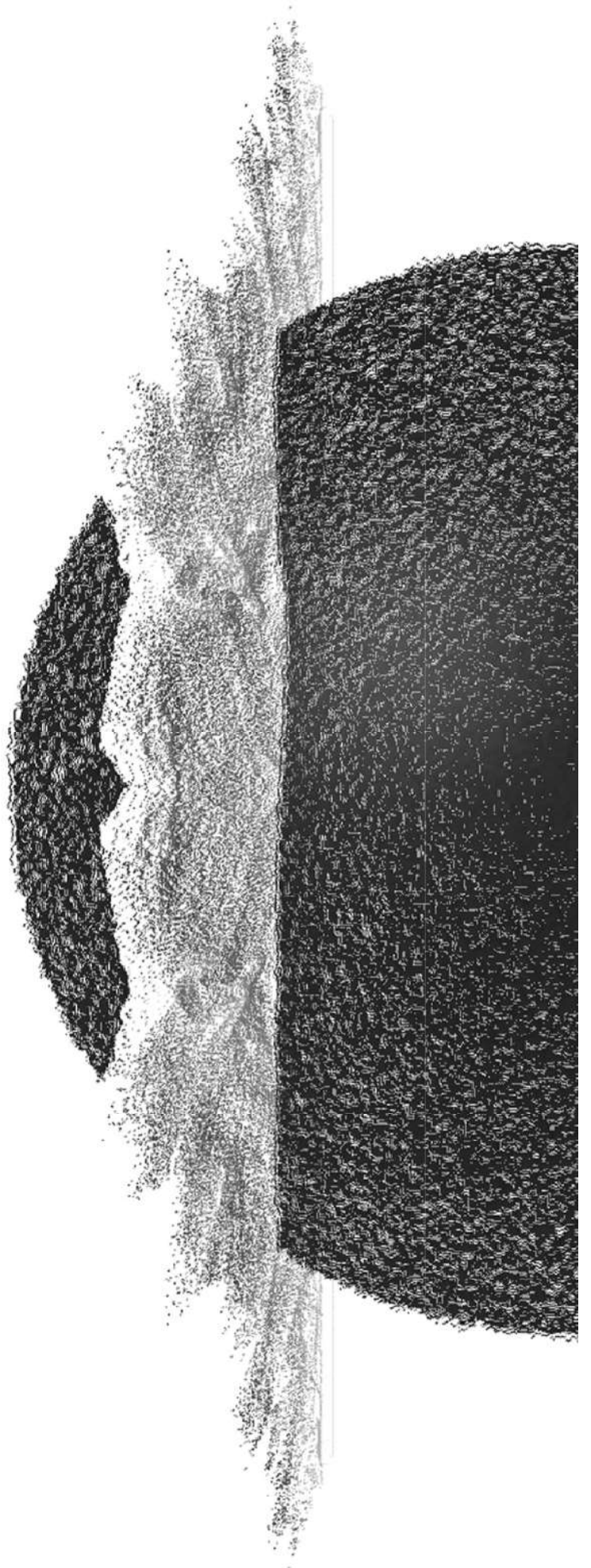


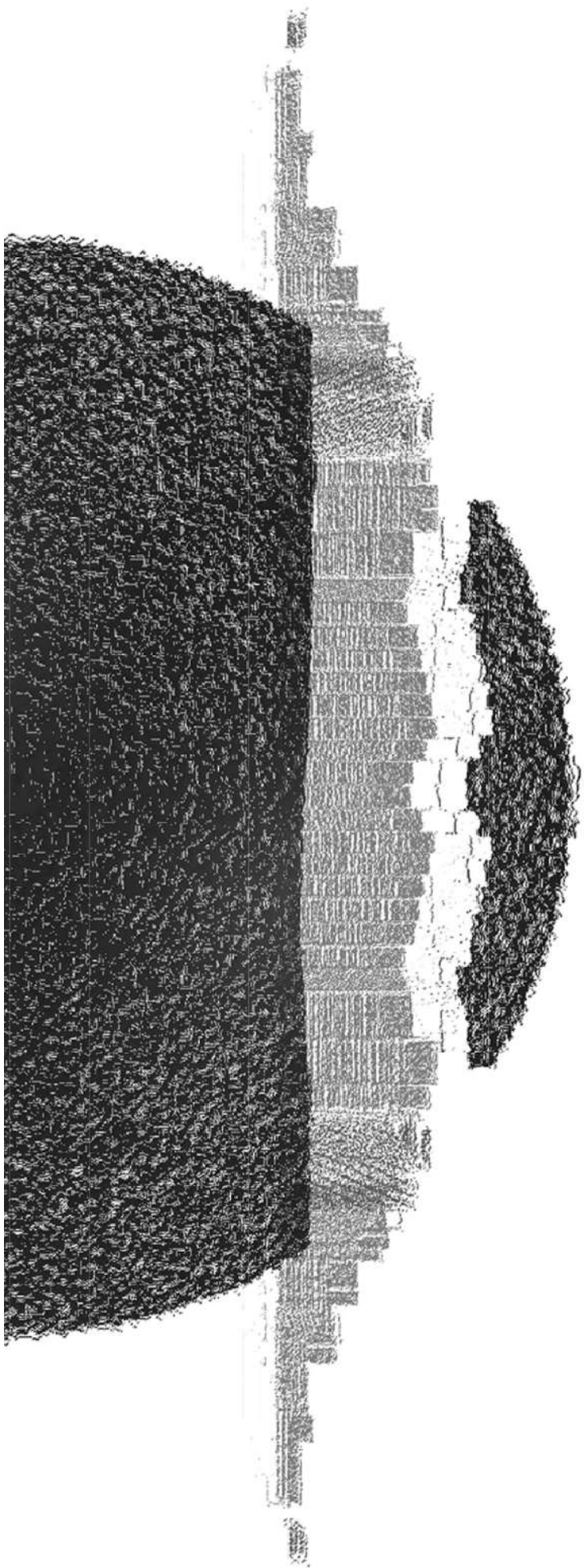


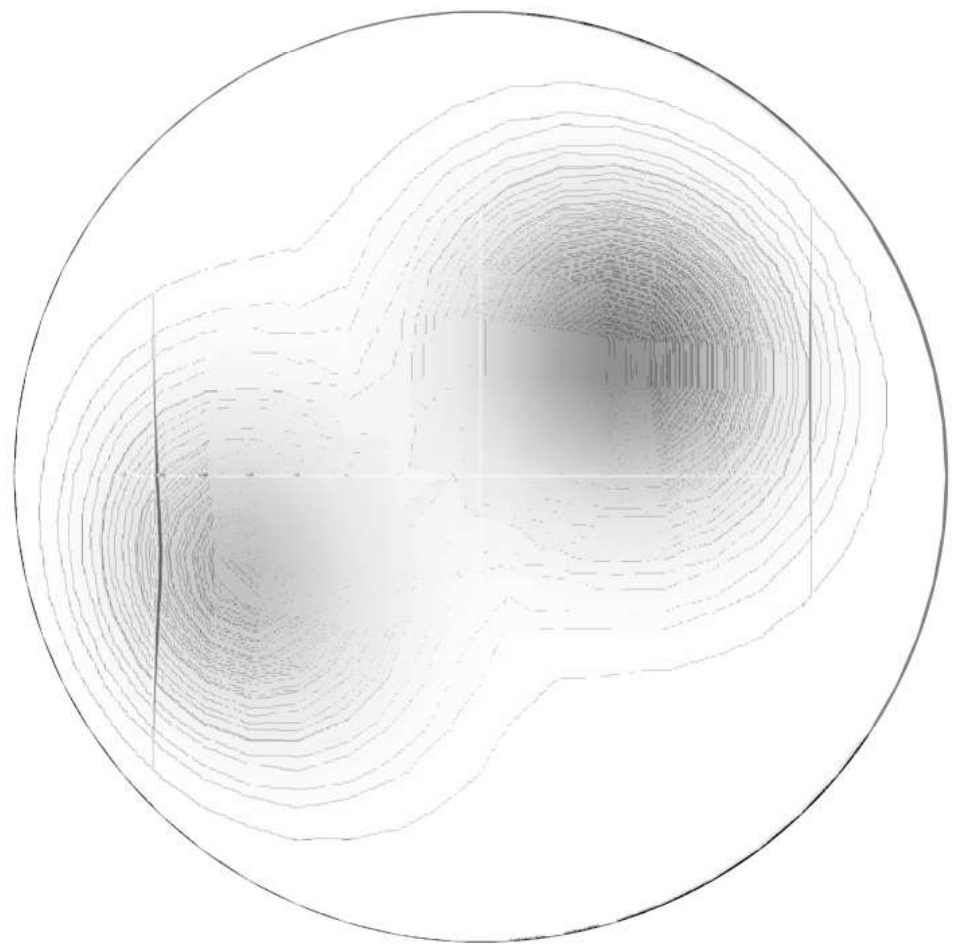


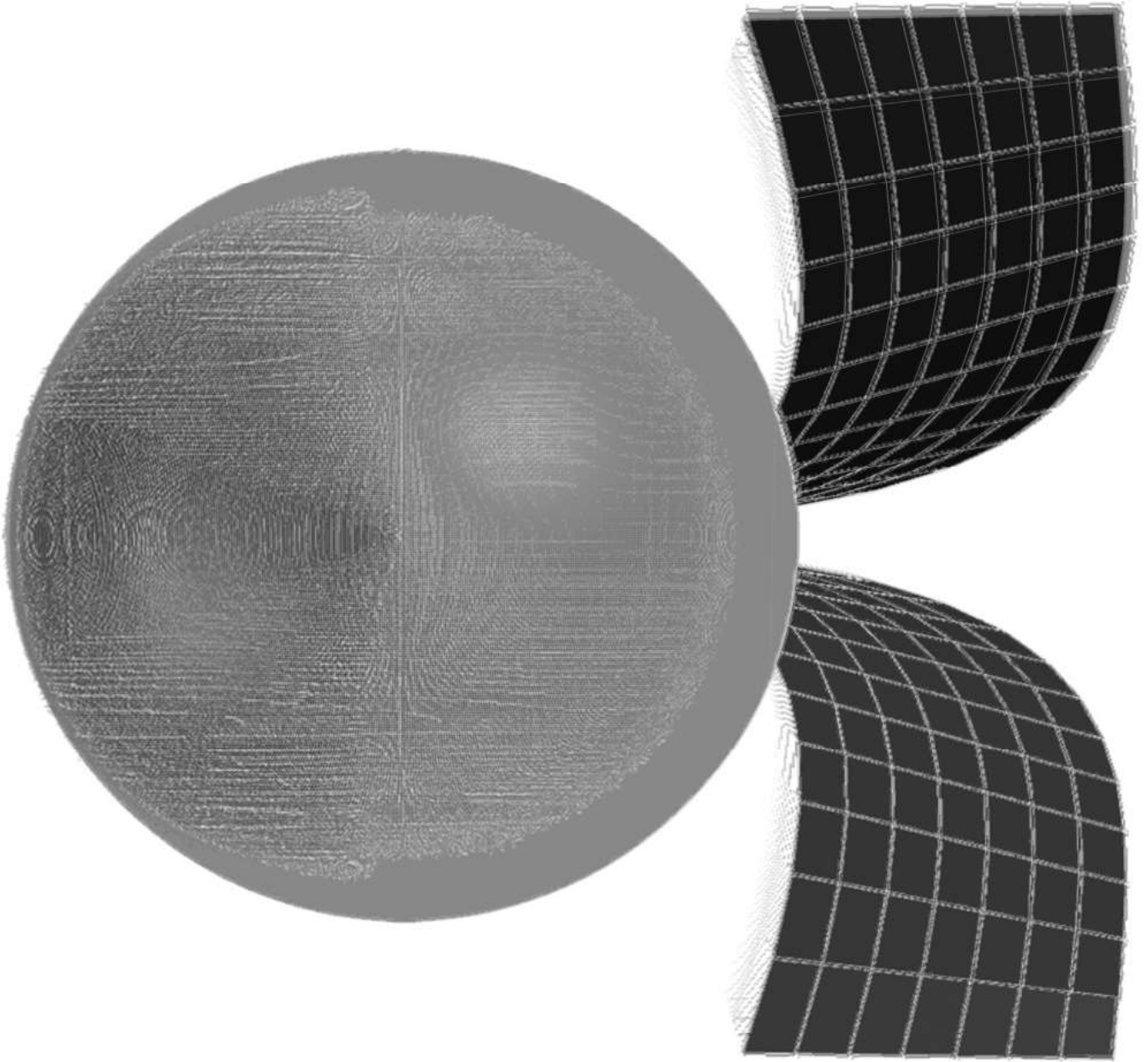


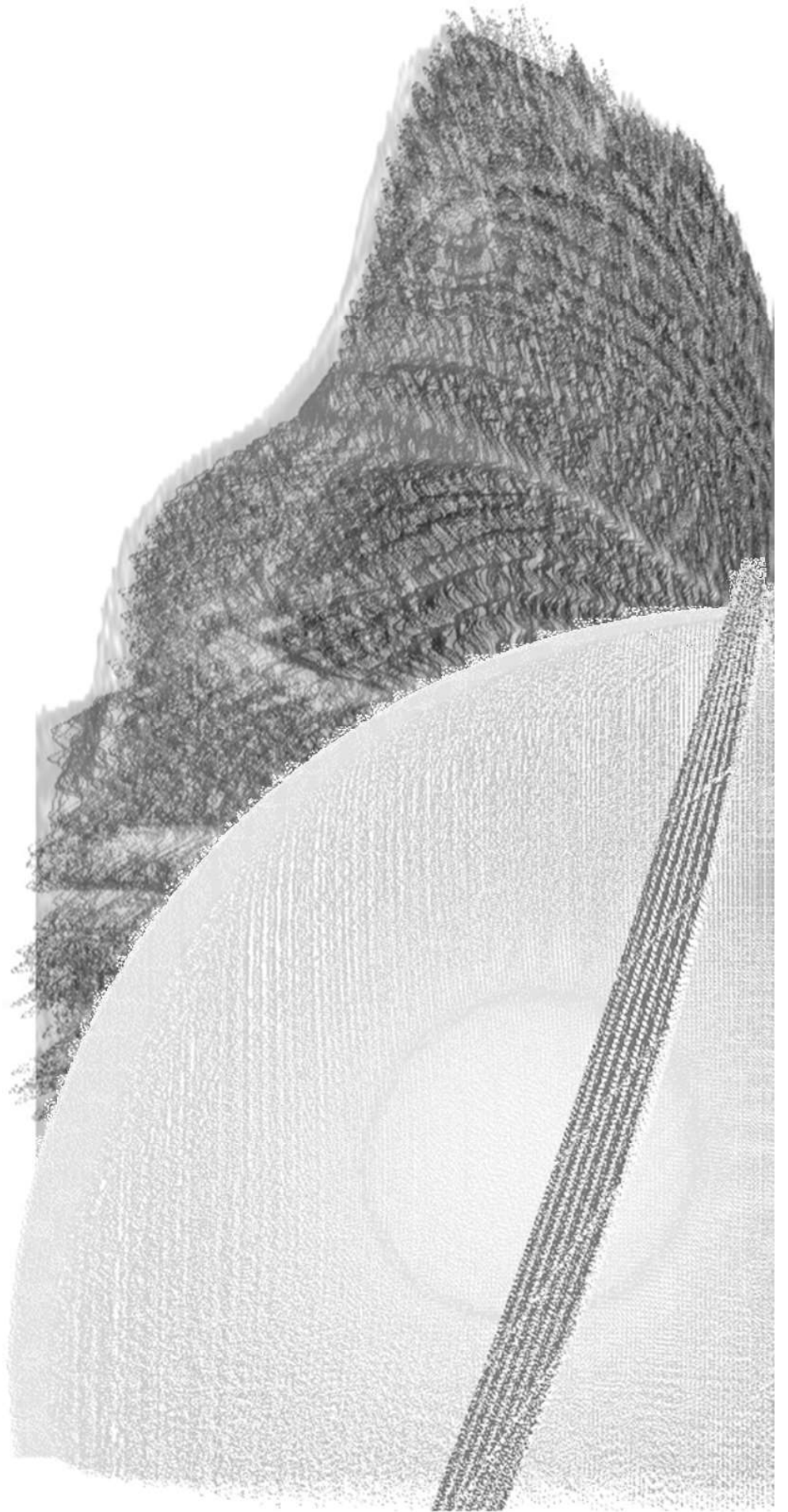


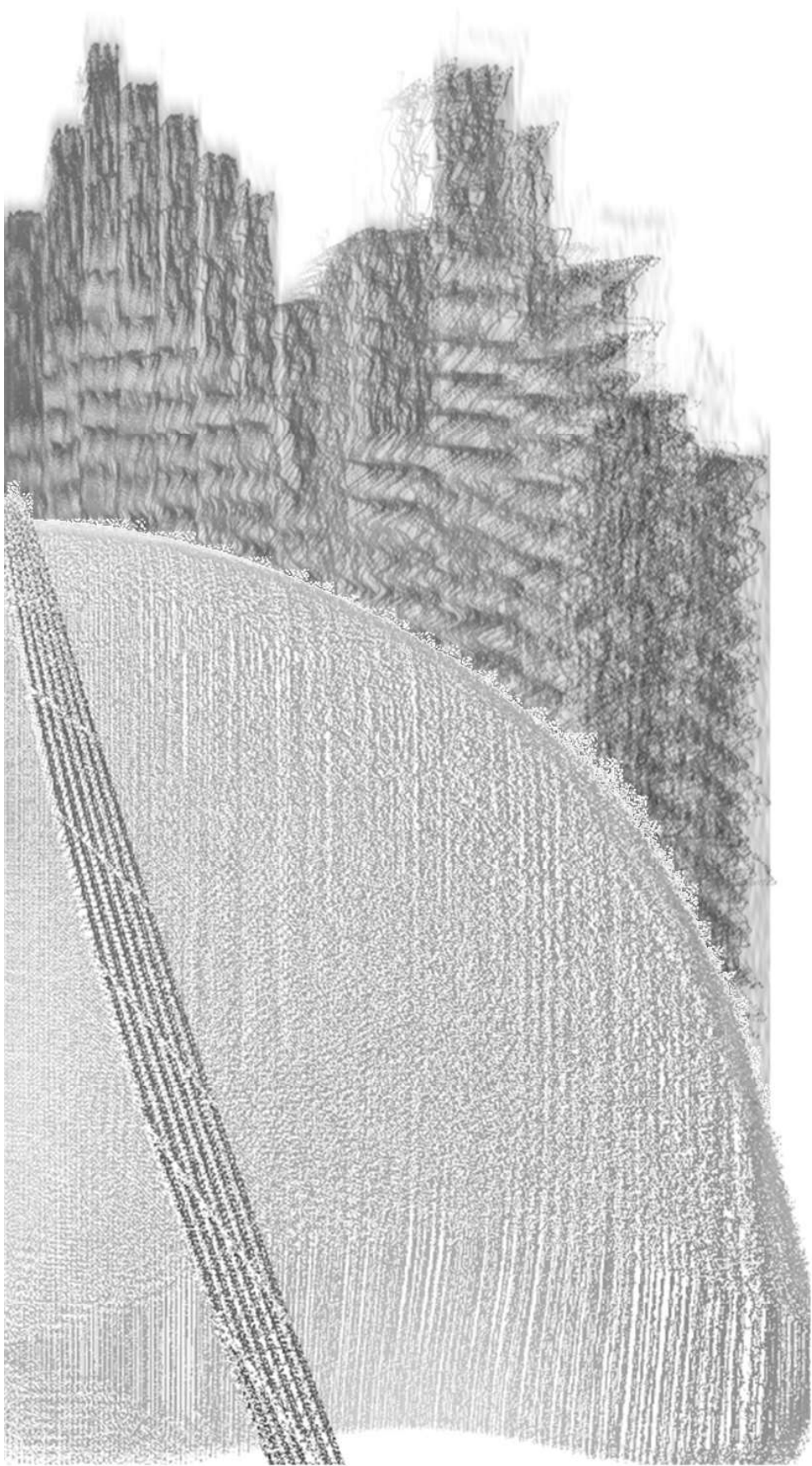


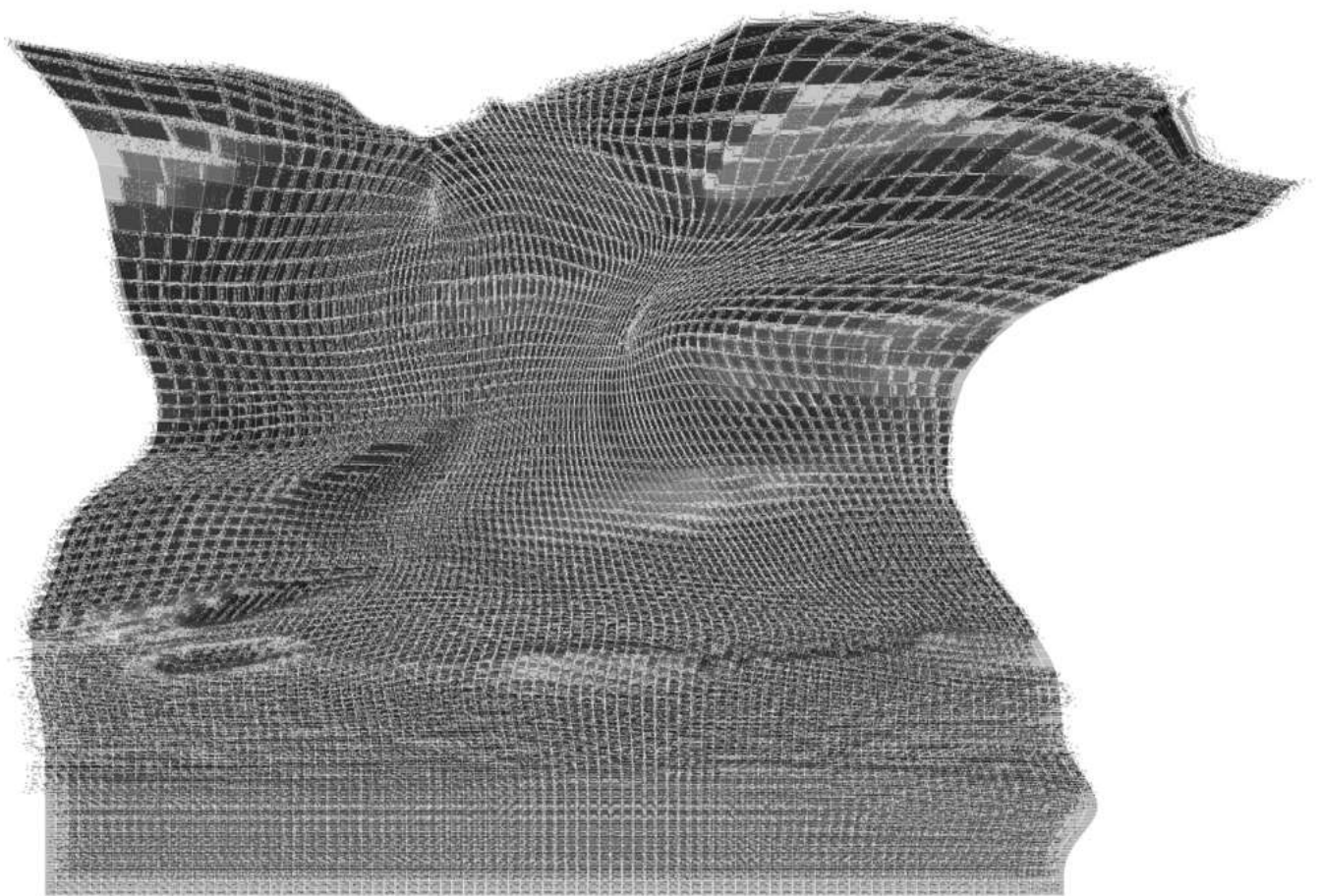


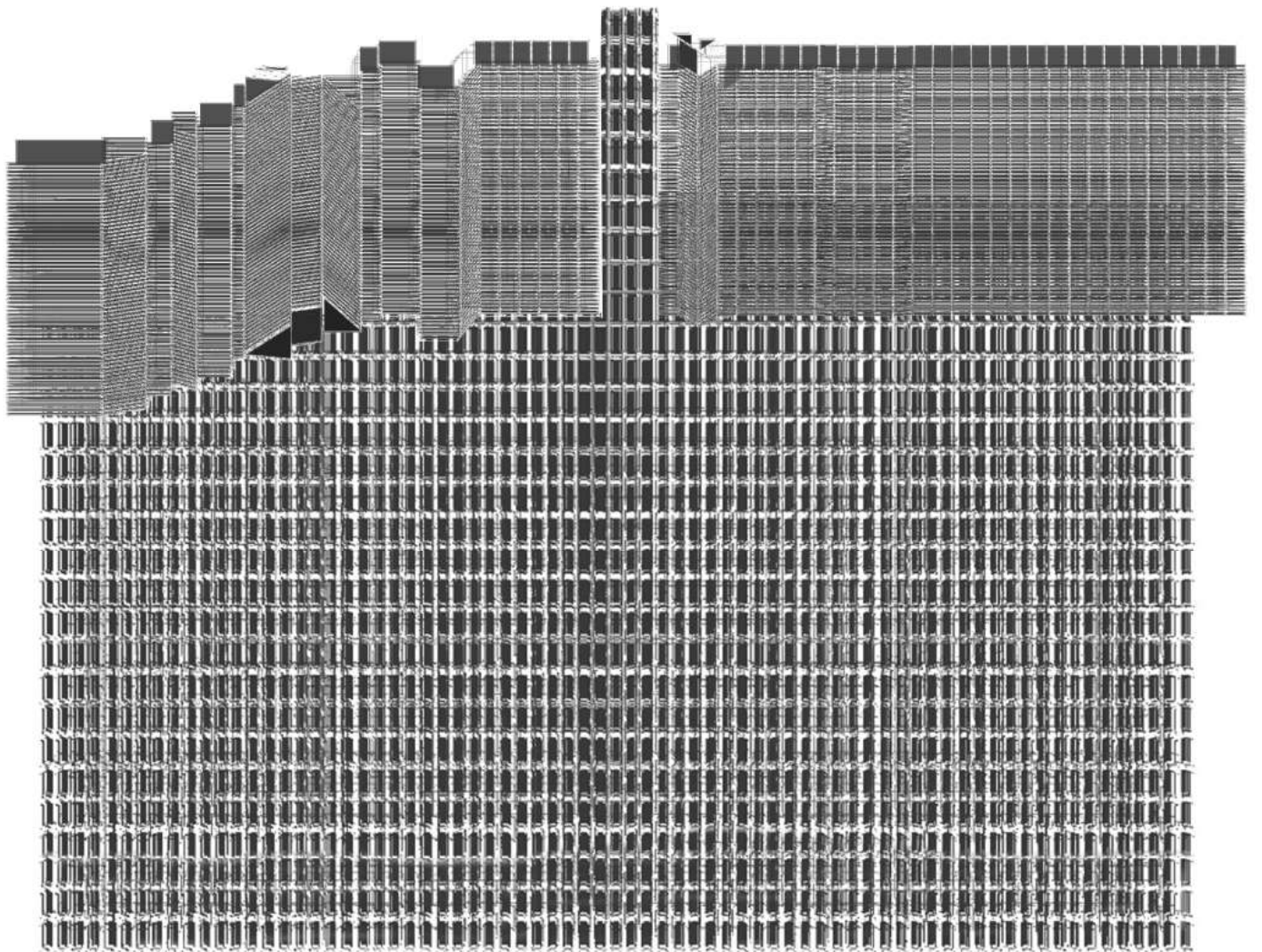












REFERENCES

VIDEO

CURRENT.CAM

**ELI JOTEVA,
PROVIDES NG,
ALEXEY YANSITOV,
ARTEM KONEVSKIKH**

FORENSIC ARCHITECTURE CLOUD STUDIES

HYPERNORMALISM

ADAM CURTIS

OF EARTH AND SKY

**ALEXANDER GEYSMAN,
OLEZIA KOVALENKO,
ANNA-LUISE LORENZ,
GEORGE PAPAMATTHEAKIS**

PLEASURE PROSPECTS

EMILJA SKARNULYTE

TEXT

**A HOME IN THE WORLD: HOUSES AND
CULTURES**

MARTINE & CAROLINE LAFFOR

**CRADLE TO CRADLE,
MICHAEL BRAUNGART,
WILLIAM MCDONOUGH**

PHILOSOPHY GONE WILD

HOLMES RONSTON III

POETIC INSTANT AND

METAPHYSICAL INSTANT

GASTON BACHELARD

THE PLANETARY GARDEN

GILLES CLÉMENT